

UL Listed Stainless Steel Conduit Nipples



[See 3D Product Image \(click here\)](#)

Certifications and Compliances:

- Calbrite stainless steel conduit nipples are UL / CUL listed and manufactured in accordance to UL 6A & ANSI C80.1 standards
- UL/cUL 6A file number - E230584
- Custom lengths available upon request
- Manufactured in the USA



TYPE 304SS					
Size -in	Close	1½"	2"	2½"	3"
½"	S405CLCN00	S40515CN00	S40520CN00	S40525CN00	S40530CN00
¾"	S407CLCN00	S40715CN00	S40720CN00	S40725CN00	S40730CN00
1"	S410CLCN00		S41020CN00	S41025CN00	S41030CN00
1¼"	S412CLCN00		S41220CN00	S41225CN00	S41230CN00
1½"	S415CLCN00		S41520CN00	S41525CN00	S41530CN00
2"	S420CLCN00				S42030CN00
2½"	S425CLCN00				
3"	S430CLCN00				
4"	S440CLCN00				
Size -in	3½"	4"	5"	6"	
½"	S40535CN00	S40540CN00	S40550CN00	S40560CN00	
¾"	S40735CN00	S40740CN00	S40750CN00	S40760CN00	
1"	S41035CN00	S41040CN00	S41050CN00	S41060CN00	
1¼"	S41235CN00	S41240CN00	S41250CN00	S41260CN00	
1½"	S41535CN00	S41540CN00	S41550CN00	S41560CN00	
2"	S42035CN00	S42040CN00	S42050CN00	S42060CN00	
2½"			S42550CN00	S42560CN00	
3"			S43050CN00	S43060CN00	
4"			S44050CN00	S44060CN00	

TYPE 316SS					
Size -in	Close	1½"	2"	2½"	3"
½"	S605CLCN00	S60515CN00	S60520CN00	S60525CN00	S60530CN00
¾"	S607CLCN00	S60715CN00	S60720CN00	S60725CN00	S60730CN00

1"	S610CLCN00		S61020CN00	S61025CN00	S61030CN00
1¼"	S612CLCN00		S61220CN00	S61225CN00	S61230CN00
1½"	S615CLCN00		S61520CN00	S61525CN00	S61530CN00
2"	S620CLCN00				S62030CN00
2½"	S625CLCN00				
3"	S630CLCN00				
4"	S640CLCN00				
Size -in	3½"	4"	5"	6"	
½"	S60535CN00	S60540CN00	S60550CN00	S60560CN00	
¾"	S60735CN00	S60740CN00	S60750CN00	S60760CN00	
1"	S61035CN00	S61040CN00	S61050CN00	S61060CN00	
1¼"	S61235CN00	S61240CN00	S61250CN00	S61260CN00	
1½"	S61535CN00	S61540CN00	S61550CN00	S61560CN00	
2"	S62035CN00	S62040CN00	S62050CN00	S62060CN00	
2½"			S62550CN00	S62560CN00	
3"			S63050CN00	S63060CN00	
4"			S64050CN00	S64060CN00	

Calbrite™

Stainless Steel Conduit Systems

Stainless Steel Explosion Proof UNY (Union)

Features:

- Manufactured in type 316 stainless steel to meet any stringent sanitary condition
- Polished with standard "brite" finish to increase corrosion resistance and aesthetic appearance
- Explosion proof, dust-ignition proof
- Designed for use with stainless steel threaded conduit
- NPT male threads and machined tapered female threads for smooth bore inside diameter
- No package qty. required



Certifications and Compliances:

UL 1203 Listed

CSA C22.2 Listed

UL file number – E465422

Suitable for use in Class I Division 1 Groups A, B, C and D; Class II Division 1

Groups E, F and G; and Class III Hazardous Locations

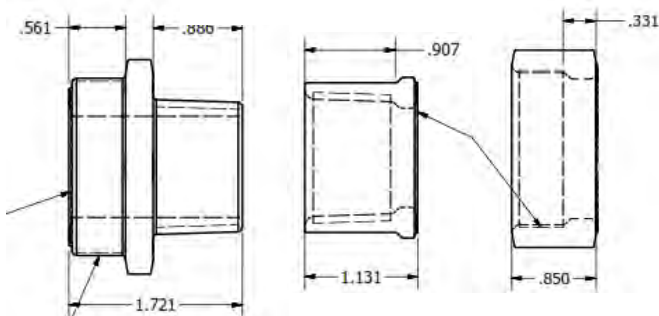
Made in the USA

Applications:

Calbrite's stainless steel UNY's are used in hazardous areas to join and connect conduit and/or other conduit fittings. Allows for simplified installations by eliminating disassembly of the conduit or fittings with the one piece design.

Industries Commonly Served:

- Food & Beverage Production & Distribution
- Chemical Plants
- Water & Wastewater Treatment
- Pharmaceuticals & Cosmetics
- Refining & Extraction Sites
- Petrochemical
- Pulp & Paper Mills
- Marine & Coastal Facilities
- Along with other corrosive environments



Part Number	Overall Length	Overall Width	Thread Length	Weight (ea) per lb.
S60700UNY0	2.700"	1.900"	0.635"	0.75
S61000UNY0	2.825"	2.200"	0.750"	0.96

*All dimensions are for informational purposes only *Tolerances +/- 5%*

Calbrite Stainless Steel Device Boxes

Features:

- Manufactured in type 316 stainless steel for increased corrosion resistance
- Polished with standard "brite" finish to increase corrosion resistance and aesthetic appearance
- Internal grounding screw included
- Manufactured with mounting feet
- No package qty. required

Certifications & Compliances:

- UL 514A Listed - file # E307133
- Material: Body - CF8M (316)
- Grounding Screws: 316SS

Applications:

- Used for wiring devices, such as switches and receptacles



 See 3D Image

FS SINGLE GANG BOX

Part Number	Size	Wt. (lbs)	Cubic In.
S60700FS00	¾"	2.03	18"



 See 3D Image

FDC DOUBLE GANG BOX

Part Number	Size	Wt. (lbs)	Cubic In.
S60700FDCD	¾"	3.52	45"
S61000FDCD	1"	4.02	45"



 See 3D Image

FDC SINGLE GANG BOX

Part Number	Size	Wt. (lbs)	Cubic In.
S60700FDCS	¾"	2.40	25"
S61000FDCS	1"	3.10	25"



NEMA 4X

IN-USE COVER

Style	Size	Part Number
Single Gang	Shallow	S60000FVCS
Single Gang	Deep	S60000FVCD
Double Gang	Shallow	S60000FV2S



3D See 3D Image

FD SINGLE GANG BOX

Part Number	Size	Wt. (lbs)	Cubic In.
S60700FD00	¾"	2.45	25"



3D See 3D Image

FSCT & FDCT GANG BOX

Part Number	Size	Wt. (lbs)	Cubic In.
S60700FDCT	¾"	2.50	25"
S60700FSCT	¾"	2.16	18"



3D See 3D Image

FDCC & FSCC SINGLE GANG BOX

Model	Size	Part Number	Wt. (lbs)	Cubic In.
FDCC	¾"	S60700FDCC	2.50	25"
FSCC	¾"	S60700FSCC	2.10	18"



3D See 3D Image

FDX & FSX SINGLE GANG BOX

Model	Size	Part Number	Wt. (lbs)	Cubic In.
FDX	¾"	S60700FDX0	2.60	25"
FSX	¾"	S60700FSX0	2.22	18"

Calbrite™ CALSTRUT Stainless Steel Strut

Features:

- Manufactured in both type 304 & 316 stainless to meet any stringent sanitary condition
- Polished to a bright, easily maintainable finish that is modern, attractive, easy to clean and that also enhances the surface's resistance to pitting and bacterial corrosion
- Calbrite stainless steel strut functions in exactly the same way as any other metallic strut
- Channels provided by Calbrite are available in 12 different basic sizes which are subject to further variation in gauge and depth

Certifications and Compliances:

- All of Calbrite's stainless steel strut is manufactured in the USA and is fabricated to UL 36GA, ASTM A312 standards and NEC code compliance

Applications:

The Calbrite system of metal framing is based on the use of a continuous solid channel and a series of brackets and fittings, which can be fastened to it at any point. With Calbrite channel and components, racks, supports for conduit, wiring and electrical equipment, machine frames and a limitless variety of structures can be built rapidly, simply and economically.

Slotted Strut			
Trade Size	Gauge	Type	Part Number
1 5/8" x 1 5/8"	12 ga	SS304	S45810ST58
1 5/8" x 7/8"	14 ga	SS304	S45810ST78
1 5/8" x 1 5/8"	12 ga	SS316	S65810ST58
1 5/8" x 7/8"	14 ga	SS316	S65810ST78



1-5/8 Slotted Strut Submittal Sheet

7/8 Slotted Strut Submittal Sheet



[See 3D Product Image \(click here\)](#)

Solid Strut			
Trade Size	Gauge	Type	Part Number
1 5/8" x 1 5/8"	12 ga	SS304	S45810SL58
1 5/8" x 7/8"	14 ga	SS304	S45810SL78
1 5/8" x 1 5/8"	12 ga	SS316	S65810SL58
1 5/8" x 7/8"	14 ga	SS316	S65810SL78



1-5/8 Solid Strut Submittal Sheet

7/8 Solid Strut Submittal Sheet



[See 3D Product Image \(click here\)](#)

Back to Back Strut			
Trade Size	Gauge	Type	Part Number
1 5/8" x 1 5/8"	12 ga	SS304	S45810SB58
1 5/8" x 7/8"	14 ga	SS304	S45810SB78
1 5/8" x 1 5/8"	12 ga	SS316	S65810SB58
1 5/8" x 7/8"	14 ga	SS316	S65810SB78



1-5/8 Back to Back Strut
Submittal Sheet

7/8 Back to Back
Strut Submittal Sheet

Calbrite™

Stainless Steel Conduit Systems

Stainless Steel LB Condulet

Features:

- Manufactured in type 316 stainless steel to meet any stringent sanitary condition
- Polished with standard "brite" finish to increase corrosion resistance and aesthetic appearance
- Designed for use with stainless steel EMT, Light Wall, & Rigid conduit
- Solid stainless construction permits easy installation using ordinary hand tools
- The flat back design allows extra wiring capacity
- No package qty. required
- Cover & Gasket set included
- Form 8 Style



Certifications and Compliances:

UL514A approved

UL File Number – E307133

Material:

Material: Body CF8M- 316SS

Gasket - Neoprene

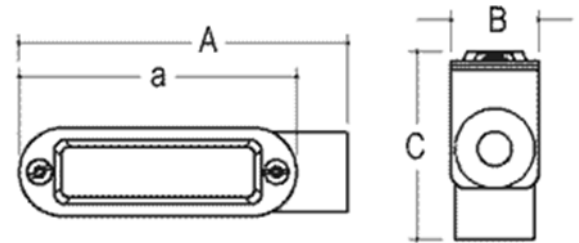
Cover & Screws: 316SS

Applications:

To connect and change direction of conduit runs

Can be used as pulling fittings

Accessible wiring chamber provides a spacious location to make splices



Industries Commonly Served:

- Food & Beverage Production & Distribution
- Chemical Plants
- Water & Wastewater Treatment
- Pharmaceuticals & Cosmetics
- Refining & Extraction Sites
- Petrochemical Operations
- Marine & Coastal Facilities
- Pulp and Paper Mills
- Along with other corrosive environments

Size	Part Number	A	B	C	a	Cubic Inches	Weight (ea) per lb.
1/2"	S60500LB00	4.970"	1.330"	2.330"	4.320"	4"	0.98
3/4"	S60700LB00	5.570"	1.570"	2.750"	4.950"	7"	1.25
1"	S61000LB00	6.500"	1.750"	3.050"	5.650"	11"	1.90
1-1/4"	S61200LB00	7.500"	2.150"	3.630"	6.530"	20"	2.90
1-1/2"	S61500LB00	8.850"	2.560"	4.030"	7.810"	35"	4.30
2"	S62000LB00	11.36"	3.480"	4.460"	10.00"	71"	8.00
2-1/2"	S62500LB00	13.43"	4.650"	5.750"	12.00"	157"	13.25
3"	S63000LB00	13.56"	4.650"	5.800"	12.00"	177"	13.94
4"	S64000LB00	16.33"	5.850"	7.375"	14.63"	380"	29.50

All dimensions are for informational purposes only *Tolerances +/- 5%

Calbrite™

Stainless Steel Conduit Systems

Stainless Steel X Condulet

Features:

- The four-hub “X” configuration limits the amount of additional fittings needed on a project as wires can be fed through and then out in several directions to simplify installation.
- Manufactured in type 316 stainless steel to meet any stringent sanitary condition
- Polished with standard "brite" finish to increase corrosion resistance and aesthetic appearance
- Solid stainless construction permits easy installation using ordinary hand tools
- The flat back design allows extra wiring capacity
- No package qty. required
- Cover & Gasket set included
- Form 8 Style

Certifications and Compliances:

Manufactured to comply with UL514A Standards

Material:

Material: Body CF8M- 316SS

Gasket - Neoprene

Cover & Screws: 316SS

Applications:

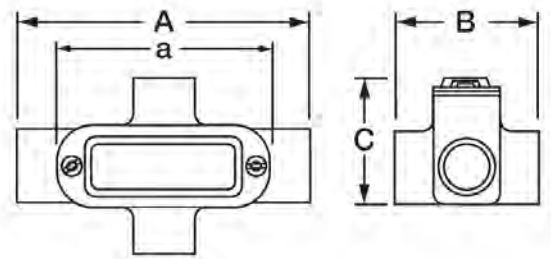
To connect and change direction of conduit runs

Can be used as pulling fittings

Accessible wiring chamber provides a spacious location to make splices

Industries Commonly Served:

- Food & Beverage Production & Distribution
- Chemical Plants
- Water & Wastewater Treatment
- Pharmaceuticals & Cosmetics
- Refining & Extraction Sites
- Petrochemical Operations
- Marine & Coastal Facilities
- Pulp and Paper Mills
- Along with other corrosive environments



Size	Part Number	A	B	C	a	Cubic Inches	Weight (ea) per lb.
½"	S60500XB00	5.640"	2.630"	2.050"	4.320"	5"	1.36
¾"	S60700XB00	6.200"	3.070"	2.300"	4.940"	9"	1.86
1"	S61000XB00	7.300"	3.540"	2.330"	5.650"	13"	2.77
1-1/2"	S61500XB00	9.810"	4.500"	3.060"	7.810"	35"	5.24
2"	S62000XB00	12.250"	5.810"	3.700"	10.000"	77"	9.63

All dimensions are for informational purposes only *Tolerances +/- 5%

Calbrite™

Stainless Steel Conduit Systems

Stainless Steel TB Condulet

Features:

- Manufactured in type 316 stainless steel to meet any stringent sanitary condition
- Polished with standard "brite" finish to increase corrosion resistance and aesthetic appearance
- Designed for use with stainless threaded conduit
- Solid stainless construction permits easy installation using ordinary hand tools
- The flat back design allows extra wiring capacity
- No package qty. required
- Cover & Gasket included
- Form 8 Style



Certifications and Compliances:

UL514A approved
UL File Number – E307133

Material:

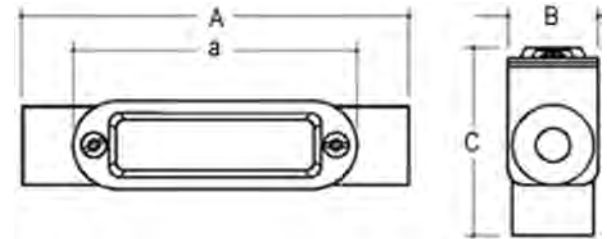
Material: Body CF8M- 316SS
Gasket - Neoprene
Cover & Screws: 316SS

Applications:

To connect and change direction of conduit runs
Can be used as pulling fittings
Accessible wiring chamber provides a spacious location to make splices

Industries Commonly Served:

- Food & Beverage Production & Distribution
- Chemical Plants
- Water & Wastewater Treatment
- Pharmaceuticals & Cosmetics
- Refining & Extraction Sites
- Petrochemical Operations
- Marine & Coastal Facilities
- Pulp and Paper Mills
- Along with other corrosive environments



Size	Part Number	A	B	C	a	Cubic Inches	Weight (ea) per lb.
1/2"	S60500TB00	5.690"	1.350"	2.500"	4.320"	5"	1.08
3/4"	S60700TB00	6.270"	1.600"	2.720"	4.940"	9"	1.50
1"	S61000TB00	7.320"	1.770"	3.100"	5.650"	13"	2.28
1-1/2"	S61500TB00	10.40"	2.560"	4.290"	7.810"	35"	4.90
2"	S62000TB00	12.30"	3.500"	4.640"	10.00"	77"	9.32

*All dimensions are for informational purposes only *Tolerances +/- 5%*

Calbrite™

Stainless Steel Conduit Systems

Stainless Steel T Conduit Body

Features:

- Manufactured in type 316 stainless steel to meet any stringent sanitary condition
- Polished with standard "brite" finish to increase corrosion resistance and aesthetic appearance
- Solid stainless construction permits easy installation using ordinary hand tools
- The flat back design allows extra wiring capacity
- No package qty. required
- Cover and Gasket set included
- Form 8 Style



Certifications and Compliances:

UL / cUL 514A Listed

UL file number – E307133

The products covered by this standard are intended for installation in accordance with the National Electrical Code (NEC), NFPA 70, the Canadian Electrical Code (CEC), Part I, and the Standard for Electrical Installations, NOM-001-SEDE.

Material:

Material: Body - 316SS

Gasket - Neoprene

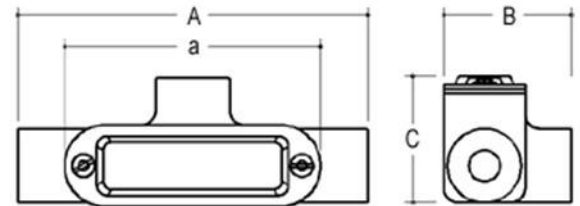
Cover and Screws: 316SS

Applications:

To connect and change direction of conduit runs. Can be used as pulling fittings. Accessible wiring chamber provides a spacious location to make splices

Industries Commonly Served:

- Food & Beverage Production & Distribution
- Chemical Plants
- Water & Wastewater Treatment
- Pharmaceuticals & Cosmetics
- Refining & Extraction Sites
- Petrochemical Operations
- Marine & Coastal Facilities
- Pulp and Paper Mills
- Along with other corrosive environments



Size	Part Number	A	B	C	a	Cubic Inches	Weight (ea) per lb.
1/2"	S60500TE00	5.940"	2.132"	2.030"	4.320"	5"	1.28
3/4"	S60700TE00	6.538"	2.474"	2.320"	4.940"	9"	1.89
1"	S61000TE00	7.690"	2.830"	2.330"	5.650"	13"	2.50
1-1/4"	S61200TE00	8.520"	3.190"	2.900"	6.530"	24"	3.50
1-1/2"	S61500TE00	9.923"	3.585"	3.000"	7.810"	35"	5.00
2"	S62000TE00	12.30"	4.700"	3.880"	10.00"	77"	9.82
2-1/2"	S62500TE00	15.29"	6.200"	4.550"	12.00"	160"	14.32
3"	S63000TE00	15.33"	6.280"	4.520"	12.00"	177"	15.00
4"	S64000TE00	18.34"	7.610"	5.930"	14.63"	382"	30.00

All dimensions are for informational purposes only *Tolerances +/- 5%

Calbrite™

Stainless Steel Conduit Systems

Stainless Steel LR Condulet

Features:

- Manufactured in type 316 stainless steel to meet any stringent sanitary condition
- Polished with standard "brite" finish to increase corrosion resistance and aesthetic appearance
- Designed for use with stainless threaded conduit
- Solid stainless construction permits easy installation using ordinary hand tools
- The flat back design allows extra wiring capacity
- No package qty. required
- Cover & Gasket included
- Form 8 Style



Certifications and Compliances:

UL514A approved

UL File Number – E307133

Material:

Material: Body CF8M- 316SS

Gasket - Neoprene

Cover & Screws: 316SS

Applications:

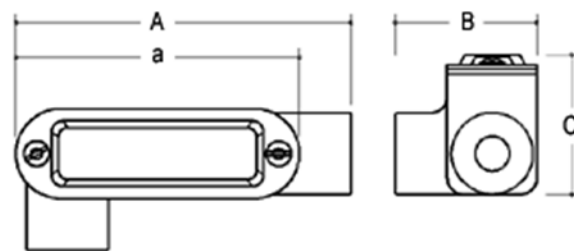
To connect and change direction of conduit runs

Can be used as pulling fittings

Accessible wiring chamber provides a spacious location to make splices

Industries Commonly Served:

- Food & Beverage Production & Distribution
- Chemical Plants
- Water & Wastewater Treatment
- Pharmaceuticals & Cosmetics
- Refining & Extraction Sites
- Petrochemical Operations
- Marine & Coastal Facilities
- Pulp and Paper Mills
- Along with other corrosive environments



Size	Part Number	A	B	C	a	Cubic Inches	Weight (ea) per lb.
½"	S60500LR00	4.950"	2.150"	1.690"	4.320"	4"	1.04
¾"	S60700LR00	5.590"	2.320"	1.950"	4.940"	7"	1.34
1"	S61000LR00	6.480"	2.670"	2.250"	5.650"	11"	1.91
1-1/2"	S61500LR00	8.940"	3.650"	3.040"	7.810"	35"	4.45
2"	S62000LR00	11.17"	4.710"	3.860"	10.00"	71"	9.02

All dimensions are for informational purposes only *Tolerances +/- 5%

Calbrite™

Stainless Steel Conduit Systems

Stainless Steel LL Condulet

Features:

- Manufactured in type 316 stainless steel to meet any stringent sanitary condition
- Polished with standard "brite" finish to increase corrosion resistance and aesthetic appearance
- Designed for use with stainless threaded conduit
- Solid stainless construction permits easy installation using ordinary hand tools
- The flat back design allows extra wiring capacity
- No package qty. required
- Cover & Gasket included
- Form 8 Style



Certifications and Compliances:

UL514A approved
UL File Number – E307133

Material:

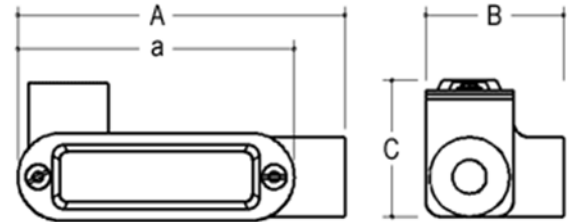
Material: Body CF8M- 316SS
Gasket - Neoprene
Cover & Screws: 316SS

Applications:

To connect and change direction of conduit runs
Can be used as pulling fittings
Accessible wiring chamber provides a spacious location to make splices

Industries Commonly Served:

- Food & Beverage Production & Distribution
- Chemical Plants
- Water & Wastewater Treatment
- Pharmaceuticals & Cosmetics
- Refining & Extraction Sites
- Petrochemical Operations
- Marine & Coastal Facilities
- Pulp and Paper Mills
- Along with other corrosive environments



Size	Part Number	A	B	C	A	Cubic Inches	Weight (ea) per lb.
1/2"	S60500LL00	4.950"	2.150"	1.690"	4.320"	4"	1.04
3/4"	S60700LL00	5.590"	2.320"	1.950"	4.940"	7"	1.34
1"	S61000LL00	6.480"	2.670"	2.250"	5.650"	11"	1.91
1-1/2"	S61500LL00	8.940"	3.650"	3.040"	7.810"	35"	4.45
2"	S62000LL00	11.17"	4.710"	3.860"	10.00"	71"	9.02

All dimensions are for informational purposes only *Tolerances +/- 5%