

Calconduit™

Rigid Conduit, Rigid & EMT Fittings

Galvanized Rigid Conduit

Application:

Calconduit GRC can be installed indoors or outdoors, exposed or concealed, in all kinds of atmospheric conditions, and in hazardous locations, when in accordance with NEC® 2002 Article 344. Also, it provides mechanical protection for the conductors while reducing Electro-Magnetic Field (EMF) exposure and shielding against Electro-Magnetic Interference (EMI).

Features:

Calconduit GRC is threaded on both ends, with a coupling applied to one end and a thread protector to the other

The pitch of the threads conforms to the American National Standard for pipe threads, general purpose (Inch), ANSI/AMSE B1.20.1

Threads are protected after cutting by an application of molten zinc

Hot Dipped Galvanized HDG conduit

Certifications and Compliances:

American National Standards Institute (ANSI®)

American National Standard for Rigid Steel Tubing (ANSI® C80.1)

Underwriters Laboratories Standard for Rigid Steel Tubing (UL6)

National Electric Code® 2002 Article 344 (1999 NEC Article 346)

Federal Specification WW-C_581 (which may still be referenced, however the federal government has canceled it and adopted the UL6 and ANSI C80.1 standard).

Options:

Produced in normal trade sizes from ½" to 6" in standard lengths of 10 feet (3.05 m), including coupling

The quantity in primary bundles is equal to the standard bundle quantity

Custom lengths and bends are available



Item Number	Trade Size	Nominal Weight / per 100 Ft. w/ couplings	Nominal Outside Dia.	Nominal Wall Thickness	Length w/ Coupling	Lift Quantities		
	Inches	Pounds	Inches	Inches	Feet	Pieces	Feet	Pounds
ST0510CT00	½"	82	0.840	0.104	10	250	2,500	2,050
ST0710CT00	¾"	109	1.050	0.107	10	200	2,000	2,180
ST1010CT00	1"	161	1.315	0.126	10	125	1,250	2,013
ST1210CT00	1-¼"	218	1.660	0.133	10	90	900	1,962
ST1510CT00	1-½"	263	1.900	0.138	10	80	800	2,104
ST2010CT00	2"	350	2.375	0.146	10	60	600	2,100
ST2510CT00	2-½"	559	2.875	0.193	10	37	370	2,068
ST3010CT00	3"	751	3.500	0.205	10	30	300	2,181
ST3510CT00	3-½"	880	4.000	0.215	10	25	250	2,200
ST4010CT00	4"	1030	4.500	0.225	10	20	200	2,060
ST5010CT00	5"	1400	5.563	0.245	10	15	150	2,100
ST6010CT00	6"	1840	6.625	0.266	10	10	100	1,840

Applicable tolerances: Length: 10Ft ± ¼", Outside Diameter: ½"-2" ±0.015"; 2-½"-4" ±0.025"; 5"-6" ± 1%

Calconduit

19440 S. Dominguez Hills Dr., Rancho Dominguez, CA 90220

Ph: (562) 803.4388 Ph: (800) Calpipe Fax: (310) 885.1894 | calconduit.com



Calconduit™

Rigid Conduit, Rigid & EMT Fittings

Aluminum Rigid Special Radius 90° Sweeps

Application:

Aluminum Elbows are to be installed on conduit raceways for underground stub-ups, and interconnection of conduit runs and other fittings

Features:

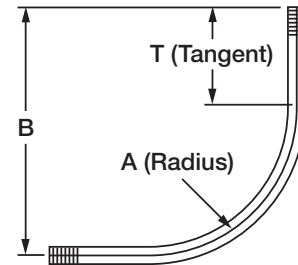
- Fabricated from UL Listed Aluminum Conduit
- Each end threaded (NPT)
- Each end fitted with protective end cap

Certifications and Compliances:

- Made In USA
- A.R.R.A. Available
- ANSI C80.5
- WW-C-540c
- ASTM B221

Options:

Available in any degree of bend from 5° to 90°, and special radius



12" - 15" - 18"												
		Radius										
A	12 Inch				15 Inch				18 Inch			
Size	Item Number	B	T	Wt.	Item Number	B	T	Wt.	Item Number	B	T	Wt.
1"	AR1012SW90	21	10	1.00	AR1015SW90	24	10	2.00	AR1018SW90	28	11	2.00
1¼"	AR1212SW90	21	10	2.00	AR1215SW90	24	10	3.00	AR1218SW90	28	11	3.00
1½"	AR1512SW90	21	10	3.00	AR1515SW90	24	10	3.00	AR1518SW90	28	11	4.00
2"	AR2012SW90	21	10	4.00	AR2015SW90	24	10	3.00	AR2018SW90	28	11	4.00
2½"	AR2512SW90	21	10	6.00	AR2515SW90	24	10	7.00	AR2518SW90	28	11	6.00
3"					AR3015SW90	24	10	9.00	AR3018SW90	28	11	8.00
3½"									AR3518SW90	28	11	11.00
4"									AR4018SW90	28	11	14.00

24" - 30" - 36"												
		Radius										
A	24 Inch				30 Inch				36 Inch			
Size	Item No	B	T	Wt.	Item Number	B	T	Wt.	Item Number	B	T	Wt.
1"	AR1024SW90	35	11	3.00	AR1030SW90	41	11	3.00	AR1036SW90	47	11	4.00
1¼"	AR1224SW90	35	11	3.00	AR1230SW90	41	11	4.00	AR1236SW90	47	11	5.00
1½"	AR1524SW90	35	11	4.00	AR1530SW90	41	11	5.00	AR1536SW90	47	11	6.00
2"	AR2024SW90	35	11	5.00	AR2030SW90	41	11	7.00	AR2036SW90	47	11	8.00
2½"	AR2524SW90	35	11	8.00	AR2530SW90	41	11	10.00	AR2536SW90	47	11	12.00
3"	AR3024SW90	35	11	11.00	AR3030SW90	41	11	13.00	AR3036SW90	47	11	16.00
3½"	AR3524SW90	35	11	14.00	AR3530SW90	41	11	16.00	AR3536SW90	47	11	19.00
4"	AR4024SW90	35	11	16.00	AR4030SW90	41	11	19.00	AR4036SW90	47	11	23.00
5"					AR5030SW90	41	11	29.00	AR5036SW90	47	11	34.00
6"									AR6036SW90	48	12	42.00

Calconduit

12021 Woodruff Ave., Downey, CA 90241

Ph: (562) 803.4388 Ph: (800) 225.7473 Fax: (562) 803.4488 | calconduit.com



Calconduit™

Rigid Conduit, Rigid & EMT Fittings

Aluminum Rigid Special Radius 90° Sweeps

48" - 60"								
Radius								
A	48 Inch				60 Inch			
Size	Item Number	B	T	Wt.	Item Number	B	T	Wt.
1"	AR1048SW90	60	12	5.00	AR1060SW90	72	12	6.00
1¼"	AR1248SW90	60	12	6.00	AR1260SW90	72	12	8.00
1½"	AR1548SW90	60	12	8.00	AR1560SW90	72	12	10.00
2"	AR2048SW90	60	12	10.00	AR2060SW90	72	12	13.00
2½"	AR2548SW90	60	12	16.00	AR2560SW90	72	12	20.00
3"	AR3048SW90	60	12	21.00	AR3060SW90	72	12	27.00
3½"	AR3548SW90	60	12	25.00	AR3560SW90	72	12	32.00
4"	AR4048SW90	60	12	29.00	AR4060SW90	72	12	38.00
5"	AR5048SW90	60	12	44.00	AR5060SW90	72	12	50.00
6"	AR6048SW90	60	12	58.00	AR6060SW90	72	12	67.00

Calconduit™

Rigid Conduit, Rigid & EMT Fittings

Aluminum Rigid Factory Elbows - 45°

Application:

Aluminum Elbows are to be installed on conduit raceways for underground stub-ups, and interconnection of conduit runs and other fittings.

Features:

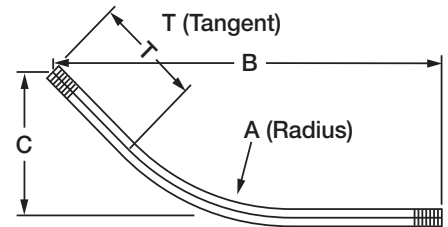
Fabricated from UL Listed Aluminum Conduit
 Each end threaded (NPT).
 Each end fitted with protective end cap

Certifications and Compliances:

- Made In USA
- A.R.R.A. Available
- ANSI C80.5
- WW-C-540c
- ASTM B332

Options:

Available in any degree of bend from 5° to 90°, and special radius



45° Elbows				Dimensions				
Item Number	Description	Wt. (lbs)	Box Qty	A	B	C	T	Cut Length
AR0545EL00	1/2" X 45°	0.20	50	4.0	7.0	2.9	1.9	8.0"
AR0745EL00	3/4" X 45°	0.30	50	4.5	7.4	3.0	2.0	9.0"
AR1045EL00	1" X 45°	0.50	25	5.8	9.5	4.0	2.7	10.0"
AR1245EL00	1-1/4" X 45°	0.90	20	7.3	13.1	5.4	4.3	15.5"
AR1545EL00	1-1/2" X 45°	1.20	15	8.3	14.0	5.8	4.3	16.5"
AR2045EL00	2" X 45°	1.60	10	9.5	16.1	6.6	5.4	18.5"
AR2545EL00	2-1/2" X 45°	3.90	50	10.5	19.0	7.9	6.8	22.5"
AR3045EL00	3" X 45°	5.50	35	13.0	20.5	8.5	6.7	23.5"
AR3545EL00	3-1/2" X 45°	6.50	35	15.0	22.8	9.5	7.1	26.0"
AR4045EL00	4" X 45°	9.60	35	16.0	29.2	12.1	10.5	33.5"
AR5045EL00	5" X 45°	17.20	bulk	24.0	36.1	15.0	11.2	43.0"
AR6045EL00	6" X 45°	26.40	bulk	30.0	42.9	17.8	12.8	48.0"

Calconduit

12021 Woodruff Ave., Downey, CA 90241

Ph: (562) 803.4388 Ph: (800) 225.7473 Fax: (562) 803.4488 | calconduit.com



Calconduit™

Rigid Conduit, Rigid & EMT Fittings

EMT Special Radius 90° Sweeps

Application:

EMT elbows are to be installed on conduit raceways for the interconnection of conduit runs and other fittings.

Features:

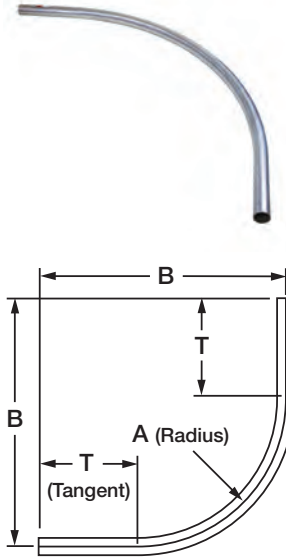
Fabricated from UL Listed Electrical Metallic Tubing (EMT)

Certifications and Compliances:

- UL & CUL Listed
- UL File Number E315441
- UL797 with statements of conformance
- ANSI C80.3
- National Electrical Code® 2008 -Article 358
- A.R.R.A. Available
- Federal Specification WW-C-563*

Options:

Available in any degree of bend from 5° to 90°, and special radius



12"				
Radius				
A	12 Inch			
Size	Item Number	B	T	Wt.
½"	EM0512SW90	21	10	1.00
¾"	EM0712SW90	21	10	1.50
1"	EM1012SW90	21	10	2.10
1-¼"	EM1212SW90	21	10	2.80
1-½"	EM1512SW90	21	10	3.50

EMT Sweeps meet UL797 and ANSI C80.3
Also available in 11-¼°, 15°, 22-½°, 30° and 60°.

24" - 30" - 36"												
Radius												
A	24 Inch				30 Inch				36 Inch			
Size	Item Number	B	T	Wt.	Item No	B	T	Wt.	Item No	B	T	Wt.
½"	EM0524SW90	35	11	1.50	EM0530SW90	41	11	1.80	EM0536SW90	47	11	2.00
¾"	EM0724SW90	35	11	2.30	EM0730SW90	41	11	2.80	EM0736SW90	47	11	3.10
1"	EM1024SW90	35	11	3.30	EM1030SW90	41	11	3.70	EM1036SW90	47	11	4.20
1-¼"	EM1224SW90	35	11	5.10	EM1230SW90	41	11	5.60	EM1236SW90	47	11	6.50
1-½"	EM1524SW90	35	11	5.80	EM1530SW90	41	11	7.00	EM1536SW90	47	11	7.70
2"	EM2024SW90	35	11	7.40	EM2030SW90	41	11	8.90	EM2036SW90	47	11	9.90
2-½"	EM2524SW90	35	11	10.80	EM2530SW90	41	11	12.90	EM2536SW90	47	11	14.40
3"	EM3024SW90	35	11	13.30	EM3030SW90	41	11	16.00	EM3036SW90	47	11	17.70
3-½"	EM3524SW90	35	11	17.80	EM3530SW90	41	11	21.40	EM3536SW90	47	11	23.80
4"	EM4024SW90	35	11	20.00	EM4030SW90	41	11	24.00	EM4036SW90	47	11	26.70

Calconduit™

Rigid Conduit, Rigid & EMT Fittings

EMT Special Radius 90° Sweeps

42" - 48" - 60"												
Radius												
A	42 Inch				48 Inch				60 Inch			
Size	Item Number	B	T	Wt.	Item No	B	T	Wt.	Item No	B	T	Wt.
½"	EM0542SW90	54	12	2.30	EM0548SW90	60	12	2.50	EM0560SW90	72	12	3.00
¾"	EM0742SW90	54	12	3.50	EM0748SW90	60	12	3.90	EM0760SW90	72	12	4.60
1"	EM1042SW90	54	12	5.00	EM1048SW90	60	12	5.40	EM1060SW90	72	12	6.20
1-¼"	EM1242SW90	54	12	7.40	EM1248SW90	60	12	8.30	EM1260SW90	72	12	10.20
1-½"	EM1542SW90	54	12	8.40	EM1548SW90	60	12	9.70	EM1560SW90	72	12	11.00
2"	EM2042SW90	54	12	11.10	EM2048SW90	60	12	12.30	EM2060SW90	72	12	15.60
2-½"	EM2542SW90	54	12	16.20	EM2548SW90	60	12	17.90	EM2560SW90	72	12	21.50
3"	EM3042SW90	54	12	20.00	EM3048SW90	60	12	22.20	EM3060SW90	72	12	26.60
3-½"	EM3542SW90	54	12	26.80	EM3548SW90	60	12	29.70	EM3560SW90	72	12	35.70
4"	EM4042SW90	54	12	30.00	EM4048SW90	60	12	33.40	EM4060SW90	72	12	40.10

Calconduit™

Rigid Conduit, Rigid & EMT Fittings

EMT Factory Elbows - 90°

Application:

EMT elbows are to be installed on conduit raceways for the interconnection of conduit runs and other fittings.

Features:

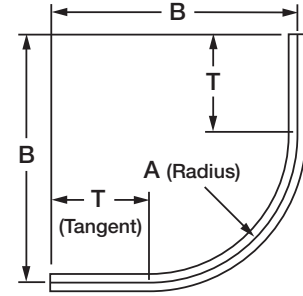
Fabricated from UL Listed Electrical Metallic Tubing (EMT)

Certifications and Compliances:

- UL & CUL Listed
- UL File Number E315441
- UL797 with statements of conformance
- ANSI C80.3
- National Electrical Code® 2008 -Article 358
- A.R.R.A. Available
- Federal Specification WW-C-563*

Options:

Available in any degree of bend from 5° to 90°, and special radius



90° Factory Elbows				Dimensions (inches)			
Item Number	Description	Wt. (lbs)	Box Qty	A	B	T	Cut Length
EM0590EL00	½" X 90°	1.00	50	4.0	6.9	2.9	12.0
EM0790EL00	¾" X 90°	1.30	50	4.5	7.4	2.9	12.9
EM1090EL00	1" X 90°	2.10	25	5.8	8.7	3.0	15.0
EM1290EL00	1-¼" X 90°	3.40	20	7.3	10.6	3.3	18.0
EM1590EL00	1-½" X 90°	4.80	15	8.3	11.9	3.6	20.3
EM2090EL00	2" X 90°	7.30	10	9.5	13.8	4.3	23.4
EM2590EL00	2-½" X 90°	13.90	50	10.5	15.8	5.3	27.0
EM3090EL00	3" X 90°	21.30	35	13.0	18.8	5.8	32.0
EM3590EL00	3-½" X 90°	27.00	35	15.0	21.8	6.8	37.0
EM4090EL00	4" X 90°	36.80	35	16.0	23.1	7.1	39.3

Calconduit

12021 Woodruff Ave., Downey, CA 90241

Ph: (562) 803.4388 Ph: (800) 225.7473 Fax: (562) 803.4488 | calconduit.com



Calconduit™

Rigid Conduit, Rigid & EMT Fittings

Galvanized Rigid Nipples

Application:

Galvanized Rigid Conduit (GRC) nipples are to be installed on conduit raceways for the interconnection of conduit runs and other fittings.



Features:

Fabricated from UL listed hot-dipped galvanized rigid conduit
Threaded ends (NPT)

Certifications and Compliances:

- UL & CUL Listed - UL6
- UL File Number E226472
- UL6 with statements of conformance
- UL ANSI C80.1
- CalTrans Specification 86-2.05
- A.R.R.A. Available
- ASTM A239

Options:

Available in custom lengths

Item Number	Size	Length	Wt. (lbs)	Box Qty
ST05CLCN00	1/2" X CL	1-1/8"	0.05	25
ST0515CN00	1/2" X 1-1/2"	1-1/2"	0.08	25
ST0520CN00	1/2" X 2"	2"	0.10	25
ST0525CN00	1/2" X 2-1/2"	2-1/2"	0.14	25
ST0530CN00	1/2" X 3"	3"	0.18	25
ST0535CN00	1/2" X 3-1/2"	3-1/2"	0.22	25
ST0540CN00	1/2" X 4"	4"	0.24	25
ST0550CN00	1/2" X 5"	5"	0.30	25
ST0560CN00	1/2" X 6"	6"	0.40	25
ST0580CN00	1/2" X 8"	8"	0.51	25
ST0510CN00	1/2" X 10"	10"	0.68	25
ST0512CN00	1/2" X 12"	12"	0.80	25
ST07CLCN00	3/4" X CL	1-3/8"	0.08	25
ST0715CN00	3/4" X 1-1/2"	1-1/2"	0.09	25
ST0720CN00	3/4" X 2"	2"	0.13	25
ST0725CN00	3/4" X 2-1/2"	2-1/2"	0.19	25
ST0730CN00	3/4" X 3"	3"	0.23	25
ST0735CN00	3/4" X 3-1/2"	3-1/2"	0.28	25
ST0740CN00	3/4" X 4"	4"	0.33	25
ST0745CN00	3/4" X 4-1/2"	4-1/2"	0.38	25
ST0750CN00	3/4" X 5"	5"	0.40	25
ST0760CN00	3/4" X 6"	6"	0.50	25
ST0780CN00	3/4" X 8"	8"	0.73	25
ST0710CN00	3/4" X 10"	10"	0.84	25
ST0712CN00	3/4" X 12"	12"	1.08	25

Item Number	Size	Length	Wt. (lbs)	Box Qty
ST10CLCN00	1" X CL	1-1/2"	0.16	25
ST1020CN00	1" X 2"	2"	0.20	25
ST1025CN00	1" X 2-1/2"	2-1/2"	0.27	25
ST1030CN00	1" X 3"	3"	0.34	25
ST1035CN00	1" X 3-1/2"	3-1/2"	0.41	25
ST1040CN00	1" X 4"	4"	0.47	25
ST1045CN00	1" X 4-1/2"	4-1/2"	0.53	25
ST1050CN00	1" X 5"	5"	0.63	25
ST1060CN00	1" X 6"	6"	0.75	25
ST1080CN00	1" X 8"	8"	1.09	25
ST1010CN00	1" X 10"	10"	1.38	25
ST1012CN00	1" X 12"	12"	1.47	25
ST12CLCN00	1-1/4" X CL	1-5/8"	0.19	25
ST1220CN00	1-1/4" X 2"	2"	0.25	25
ST1225CN00	1-1/4" X 2-1/2"	2-1/2"	0.34	25
ST1230CN00	1-1/4" X 3"	3"	0.44	25
ST1235CN00	1-1/4" X 3-1/2"	3-1/2"	0.55	25
ST1240CN00	1-1/4" X 4"	4"	0.62	25
ST1250CN00	1-1/4" X 4-1/2"	4-1/2"	0.80	25
ST1250CN00	1-1/4" X 5"	5"	0.80	25
ST1260CN00	1-1/4" X 6"	6"	1.00	25
ST1280CN00	1-1/4" X 8"	8"	1.36	25
ST1210CN00	1-1/4" X 10"	10"	1.82	25
ST1212CN00	1-1/4" X 12"	12"	1.97	25

Calconduit™

Rigid Conduit, Rigid & EMT Fittings

Galvanized Rigid Nipples

Item Number	Size	Length	Wt. (lbs)	Box Qty
ST15CLCN00	1-1/2" X CL	1-3/4"	0.24	25
ST1520CN00	1-1/2" X 2"	2"	0.28	25
ST1525CN00	1-1/2" X 2-1/2"	2-1/2"	0.36	25
ST1530CN00	1-1/2" X 3"	3"	0.48	25
ST1535CN00	1-1/2" X 3-1/2"	3-1/2"	0.68	25
ST1540CN00	1-1/2" X 4"	4"	0.77	25
ST1550CN00	1-1/2" X 5"	5"	0.97	25
ST1560CN00	1-1/2" X 6"	6"	1.13	25
ST1580CN00	1-1/2" X 8"	8"	1.53	25
ST1510CN00	1-1/2" X 10"	10"	1.94	25
ST1512CN00	1-1/2" X 12"	12"	2.60	25
ST20CLCN00	2" X CL	2"	0.38	25
ST2025CN00	2" X 2-1/2"	2-1/2"	0.59	25
ST2030CN00	2" X 3"	3"	0.62	25
ST2035CN00	2" X 3-1/2"	3-1/2"	0.88	25
ST2040CN00	2" X 4"	4"	0.90	25
ST2050CN00	2" X 5"	5"	1.32	25
ST2060CN00	2" X 6"	6"	1.46	25
ST2080CN00	2" X 8"	8"	2.20	20
ST2010CN00	2" X 10"	10"	2.85	15
ST2012CN00	2" X 12"	12"	3.02	15
ST25CLCN00	2-1/2" X CL	2-1/2"	0.84	25
ST2530CN00	2-1/2" X 3"	3"	1.00	25
ST2535CN00	2-1/2" X 3-1/2"	3-1/2"	1.20	25
ST2540CN00	2-1/2" X 4"	4"	1.50	25
ST2550CN00	2-1/2" X 5"	5"	1.97	20
ST2560CN00	2-1/2" X 6"	6"	2.40	20
ST2580CN00	2-1/2" X 8"	8"	3.29	10
ST2510CN00	2-1/2" X 10"	10"	4.22	10
ST2512CN00	2-1/2" X 12"	12"	5.05	10
ST30CLCN00	3" X CL	2-5/8"	1.18	25
ST3030CN00	3" X 3"	3"	1.30	20
ST3035CN00	3" X 3-1/2"	3-1/2"	1.57	15

Item Number	Size	Length	Wt. (lbs)	Box Qty
ST3040CN00	3" X 4"	4"	2.00	15
ST3050CN00	3" X 5"	6"	2.60	15
ST3060CN00	3" X 6"	8"	3.00	10
ST3080CN00	3" X 8"	10"	4.11	7
ST3010CN00	3" X 10"	12"	5.28	5
ST3012CN00	3" X 12"	12"	6.30	5
ST35CLCN00	3-1/2" X CL	2-3/4"	1.60	20
ST3540CN00	3-1/2" X 4"	4"	2.40	10
ST3550CN00	3-1/2" X 5"	5"	3.20	
ST3560CN00	3-1/2" X 6"	6"	3.73	10
ST3580CN00	3-1/2" X 8"	8"	5.10	6
ST3510CN00	3-1/2" X 10"	10"	6.55	5
ST3512CN00	3-1/2" X 12"	12"	7.85	5
ST40CLCN00	4" X CL	2-7/8"	1.80	20
ST4040CN00	4" X 4"	4"	2.85	15
ST4050CN00	4" X 5"	5"	3.80	12
ST4060CN00	4" X 6"	6"	4.40	10
ST4080CN00	4" X 8"	8"	6.00	6
ST4010CN00	4" X 10"	10"	7.75	5
ST4012CN00	4" X 12"	12"	9.25	5
ST50CLCN00	5" X CL	3"	2.40	bulk
ST5050CN00	5" X 5"	5"	4.80	bulk
ST5060CN00	5" X 6"	6"	6.00	bulk
ST5080CN00	5" X 8"	8"	8.25	bulk
ST5010CN00	5" X 10"	10"	10.55	bulk
ST5012CN00	5" X 12"	12"	12.60	bulk
ST60CLCN00	6" X CL	3-1/8"	3.50	bulk
ST6050CN00	6" X 5"	5"	6.60	bulk
ST6060CN00	6" X 6"	6"	8.20	bulk
ST6080CN00	6" X 8"	8"	10.40	bulk
ST6010CN00	6" X 10"	10"	14.40	bulk
ST6012CN00	6" X 12"	12"	17.20	bulk

Calconduit™

Rigid Conduit, Rigid & EMT Fittings

Galvanized Rigid Special Radius 90° Sweeps

Application:

Galvanized Rigid Conduit (GRC) Elbows are to be installed on conduit raceways for underground stub-ups, and interconnection of conduit runs and other fittings.

Features:

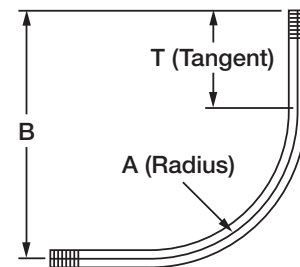
Fabricated from UL listed hot-dipped galvanized rigid conduit
Threaded ends (NPT)

Certifications and Compliances:

- UL & CUL Listed - UL6
- UL File Number E226472
- UL6 with statements of conformance
- ANSI C80.1
- CalTrans Specification 86-2.05
- A.R.R.A. Available
- ASTM A239

Options:

Available in any degree of bend from 5° to 90°, and special radius



*All dimensions are for informational purposes only
Tolerances +/-5%

12" - 18"								
Radius								
A	12 Inch				18 Inch			
Size	Item Number	B	T	Wt.	Item No	B	T	Wt.
½"	ST0512SW90	21	10	2.60	ST0518SW90	28	11	3.60
¾"	ST0712SW90	21	10	3.50	ST0718SW90	28	11	4.70
1"	ST1012SW90	21	10	5.00	ST1018SW90	28	11	6.00
1-¼"	ST1212SW90	21	10	6.00	ST1218SW90	28	11	9.00
1-½"	ST1512SW90	21	10	8.00	ST1518SW90	28	11	11.40
2"					ST2018SW90	28	11	15.20
2-½"					ST2518SW90	28	11	24.30
3"					ST3018SW90	28	11	32.90
3-½"					ST3518SW90	28	11	39.00

Calconduit™

Rigid Conduit, Rigid & EMT Fittings

Galvanized Rigid Special Radius 90° Sweeps

All dimensions are for informational purposes only

*Tolerances +/-5%

24" - 30" - 36"												
Radius												
A	24 Inch				30 Inch				36 Inch			
Size	Item Number	B	T	Wt.	Item No	B	T	Wt.	Item No	B	T	Wt.
½"	ST0524SW90	35	11	4.10	ST0530SW90	41	11	4.90	ST0536SW90	47	11	5.50
¾"	ST0724SW90	35	11	5.50	ST0730SW90	41	11	6.50	ST0736SW90	47	11	7.30
1"	ST1024SW90	35	11	8.00	ST1030SW90	41	11	9.00	ST1036SW90	47	11	10.00
1-¼"	ST1224SW90	35	11	11.00	ST1230SW90	41	11	12.00	ST1236SW90	47	11	14.00
1-½"	ST1524SW90	35	11	13.20	ST1530SW90	41	11	15.80	ST1536SW90	47	11	17.50
2"	ST2024SW90	35	11	17.50	ST2030SW90	41	11	21.00	ST2036SW90	47	11	23.30
2-½"	ST2524SW90	35	11	28.00	ST2530SW90	41	11	33.60	ST2536SW90	47	11	37.30
3"	ST3024SW90	35	11	38.00	ST3030SW90	41	11	45.60	ST3036SW90	47	11	50.70
3-½"	ST3524SW90	35	11	45.00	ST3530SW90	41	11	54.00	ST3536SW90	47	11	60.00
4"	ST4024SW90	35	11	52.50	ST4030SW90	41	11	63.00	ST4036SW90	47	11	70.00
5"									ST5036SW90	47	11	93.30
6"									ST6036SW90	48	12	123.30

42" - 48" - 60"												
Radius												
A	42 Inch				48 Inch				60 Inch			
Size	Item Number	B	T	Wt.	Item No	B	T	Wt.	Item No	B	T	Wt.
½"	ST0542SW90	54	12	6.20	ST0548SW90	60	12	6.90	ST0560SW90	72	12	8.30
¾"	ST0742SW90	54	12	8.20	ST0748SW90	60	12	9.10	ST0760SW90	72	12	11.00
1"	ST1042SW90	54	12	12.00	ST1048SW90	60	12	13.00	ST1060SW90	72	12	15.00
1-¼"	ST1242SW90	54	12	16.00	ST1248SW90	60	12	18.00	ST1260SW90	72	12	22.00
1-½"	ST1542SW90	54	12	19.00	ST1548SW90	60	12	21.90	ST1560SW90	72	12	25.00
2"	ST2042SW90	54	12	26.30	ST2048SW90	60	12	29.20	ST2060SW90	72	12	37.00
2-½"	ST2542SW90	54	12	42.00	ST2548SW90	60	12	46.70	ST2560SW90	72	12	56.00
3"	ST3042SW90	54	12	57.00	ST3048SW90	60	12	63.30	ST3060SW90	72	12	76.00
3-½"					ST3548SW90	60	12	75.00	ST3560SW90	72	12	90.00
4"					ST4048SW90	60	12	87.50	ST4060SW90	72	12	105.00
5"					ST5048SW90	60	12	116.70	ST5060SW90	72	12	140.00
6"					ST6048SW90	60	12	156.00	ST6060SW90	72	12	185.00

Calconduit™

Rigid Conduit, Rigid & EMT Fittings

Galvanized Rigid Conduit Elbows - 90°

Application:

Galvanized Rigid Conduit (GRC) Elbows are to be installed on conduit raceways for underground stub-ups, and interconnection of conduit runs and other fittings.

Features:

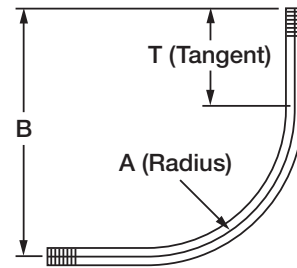
Fabricated from UL listed hot-dipped galvanized rigid conduit
Threaded ends (NPT)

Certifications and Compliances:

- UL & CUL Listed - UL6
- UL File Number E226472
- UL6 with statements of conformance
- ANSI C80.1
- CalTrans Specification 86-2.05
- A.R.R.A. Available
- ASTM A239

Options:

Available in any degree of bend from 5° to 90°, and special radius



*All dimensions are for informational purposes only
Tolerances +/-5%

Item Number	Description	Weight (lbs.)	Box Qty	A	B	C	Cut Length
ST0590EL00	1/2" X 90°	1.00	50	4.0	6.9	2.9	12.0
ST0790EL00	3/4" X 90°	1.30	50	4.5	7.4	2.9	12.9
ST1090EL00	1" X 90°	2.10	25	5.8	8.7	3.0	15.0
ST1290EL00	1-1/4" X 90°	3.40	20	7.3	10.6	3.3	18.0
ST1590EL00	1-1/2" X 90°	4.80	15	8.3	11.9	3.6	20.3
ST2090EL00	2" X 90°	7.30	10	9.5	13.8	4.3	23.4
ST2590EL00	2-1/2" X 90°	13.90	50	10.5	15.8	5.3	27.0
ST3090EL00	3" X 90°	21.30	35	13.0	18.8	5.8	32.0
ST3590EL00	3-1/2" X 90°	27.00	35	15.0	21.8	6.8	37.0
ST4090EL00	4" X 90°	36.80	35	16.0	23.1	7.1	39.3
ST5090EL00	5" X 90°	70.00	bulk	24.0	35.2	11.2	60.0
ST6090EL00	6" X 90°	111.80	bulk	30.0	42.6	12.6	72.3

Calconduit

12021 Woodruff Ave., Downey, CA 90241

Ph: (562) 803.4388 Ph: (800) 225.7473 Fax: (562) 803.4488 | calconduit.com



Calconduit™

Rigid Conduit, Rigid & EMT Fittings

Galvanized Rigid Couplings

Application:

Galvanized sweeps are to be installed on conduit raceways for interconnecting rigid conduit, elbows, nipples, and threaded fittings

Features:

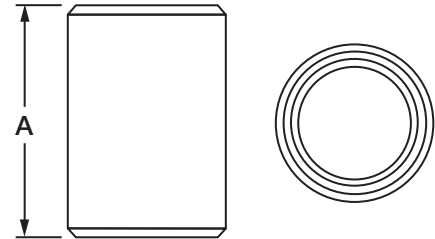
Galvanized steel, NPT thread

Standard Materials:

Galvanized rigid conduit

Certificate and Compliances:

UL compliant - manufactured to UL standards



All dimensions are for informational purposes only

*Tolerances +/-5%

Item Number	Trade Size	Weight (lbs)	Box Qty	Length A
ST0500CP00	½"	0.12	100	1.63
ST0700CP00	¾"	0.17	50	1.64
ST1000CP00	1"	0.29	30	1.97
ST1200CP00	1-¼"	0.38	25	2.03
ST1500CP00	1-½"	0.53	25	2.06
ST2000CP00	2"	0.70	20	2.13
ST2500CP00	2-½"	1.80	24	3.19
ST3000CP00	3"	2.26	16	3.31
ST3500CP00	3-½"	3.50	12	3.41
ST4000CP00	4"	3.13	10	3.52
ST5000CP00	5"	4.75	5	3.95
ST6000CP00	6"	7.65	3	4.25

Calconduit

12021 Woodruff Ave., Downey, CA 90241

Ph: (562) 803.4388 Ph: (800) 225.7473 Fax: (562) 803.4488 | calconduit.com

